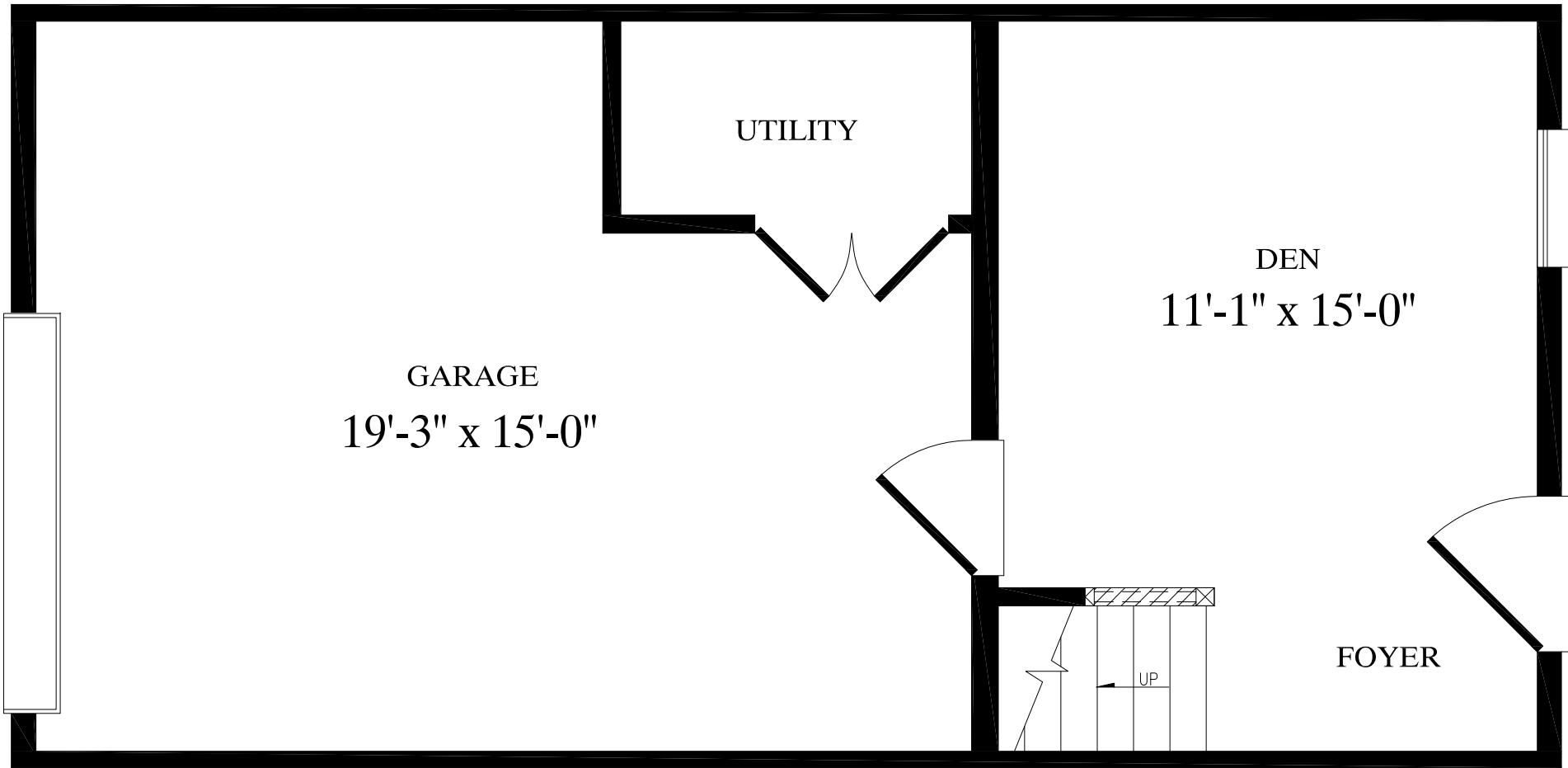




**PROFESSIONAL
BUILDING
SYSTEMS, INC.**



GARAGE
19'-3" x 15'-0"

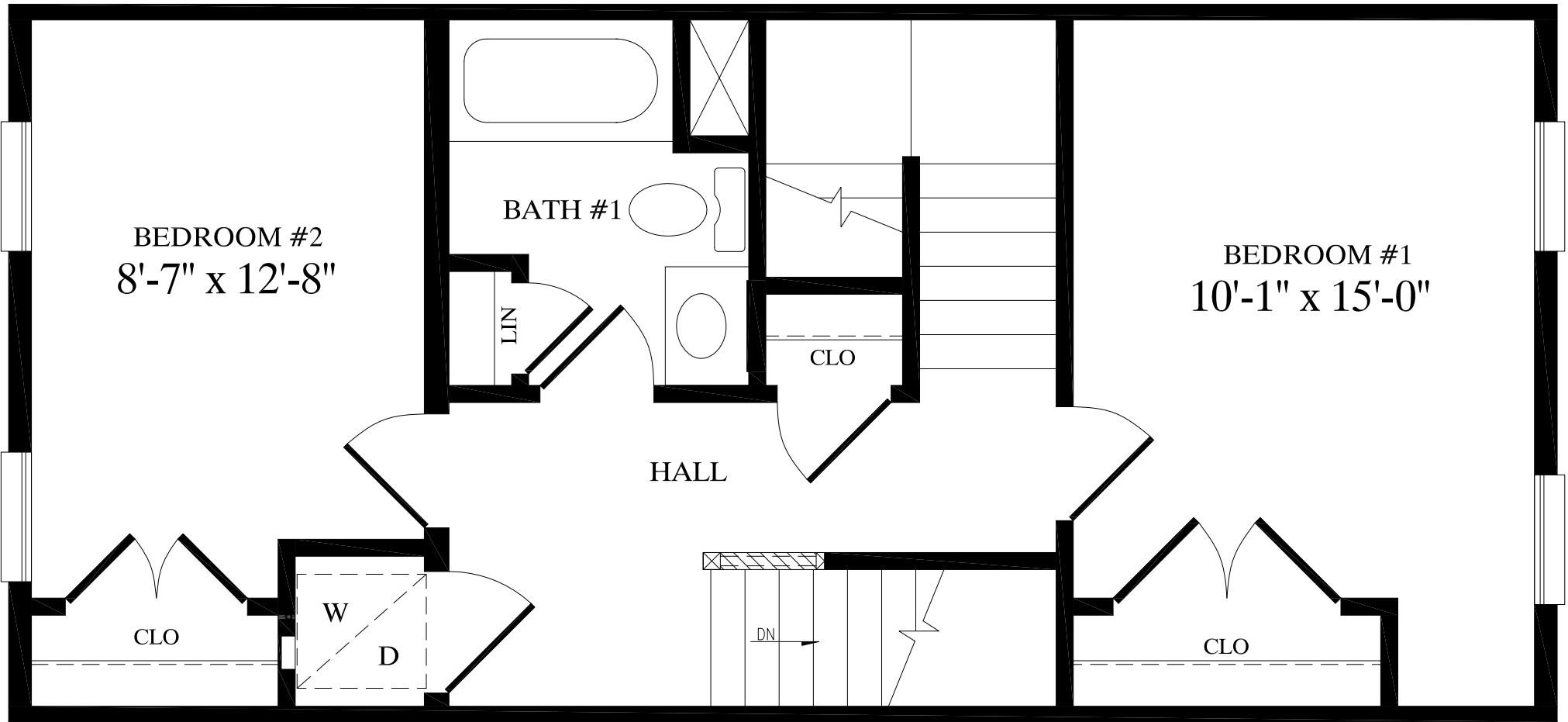
UTILITY

DEN
11'-1" x 15'-0"

FOYER

UP

ABERDEEN
16'-0" X 34'-0"
1576 TOTAL Sq. Ft.



BEDROOM #2
8'-7" x 12'-8"

BATH #1

BEDROOM #1
10'-1" x 15'-0"

HALL

CLO

W

D

DN

CLO

CLO

LIN

BREAKFAST
NOOK

9'-4" x 6'-3"

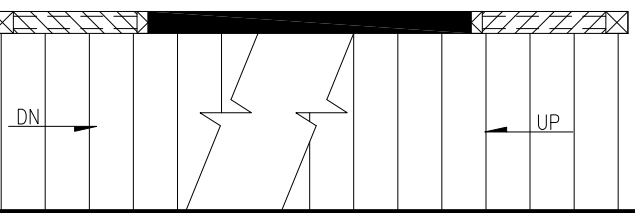
PAN

BATH #2

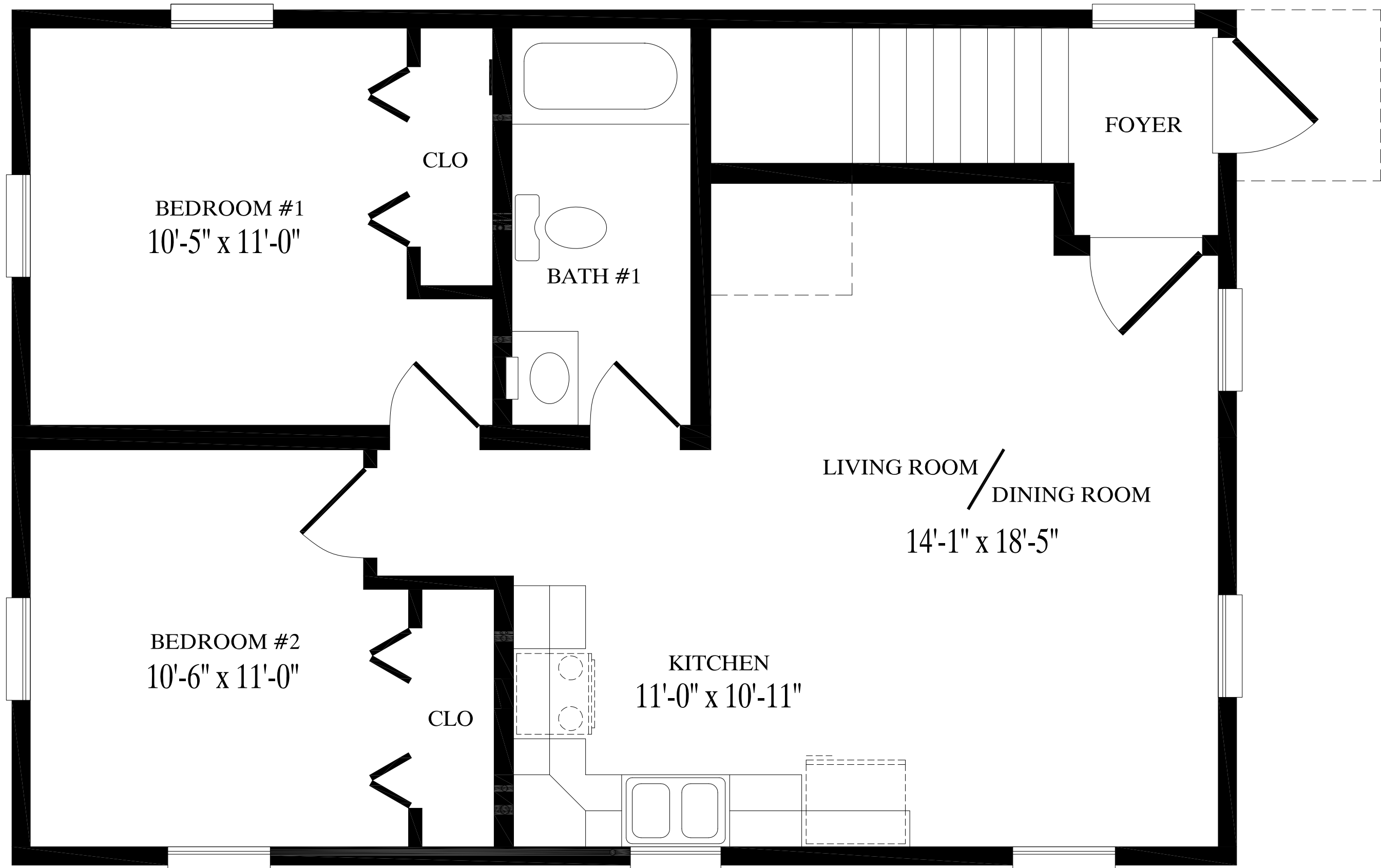
DINING ROOM /
LIVING ROOM

16'-2" x 15'-0"

KITCHEN
11'-2" x 8'-9"







BEDROOM #1
10'-5" x 11'-0"

CLO

BATH #1

FOYER

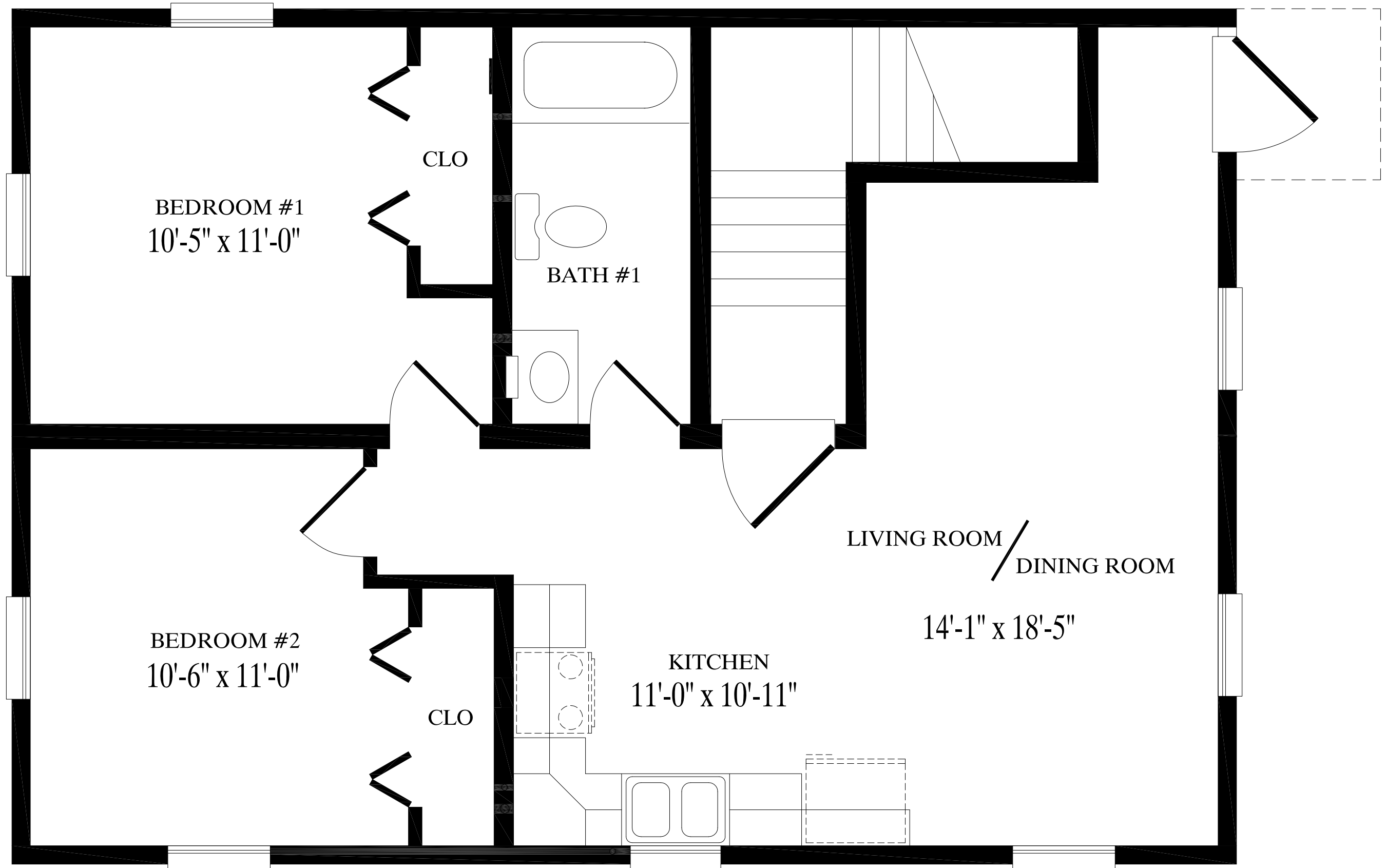
LIVING ROOM /
DINING ROOM
14'-1" x 18'-5"

BEDROOM #2
10'-6" x 11'-0"

CLO

KITCHEN
11'-0" x 10'-11"

BLOOMFIELD
24'-0" X 34'-0"
810 Sq. Ft. PER UNIT
1620 TOTAL Sq. Ft.

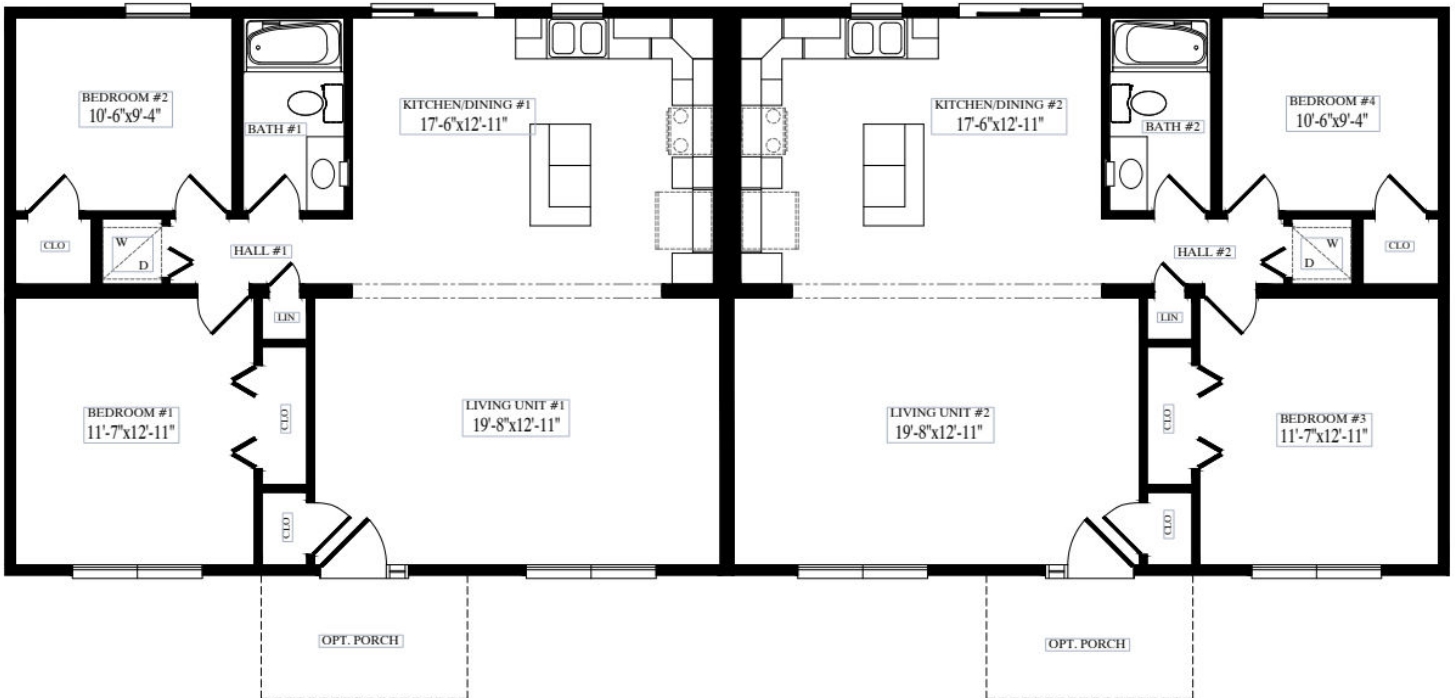




Burlington

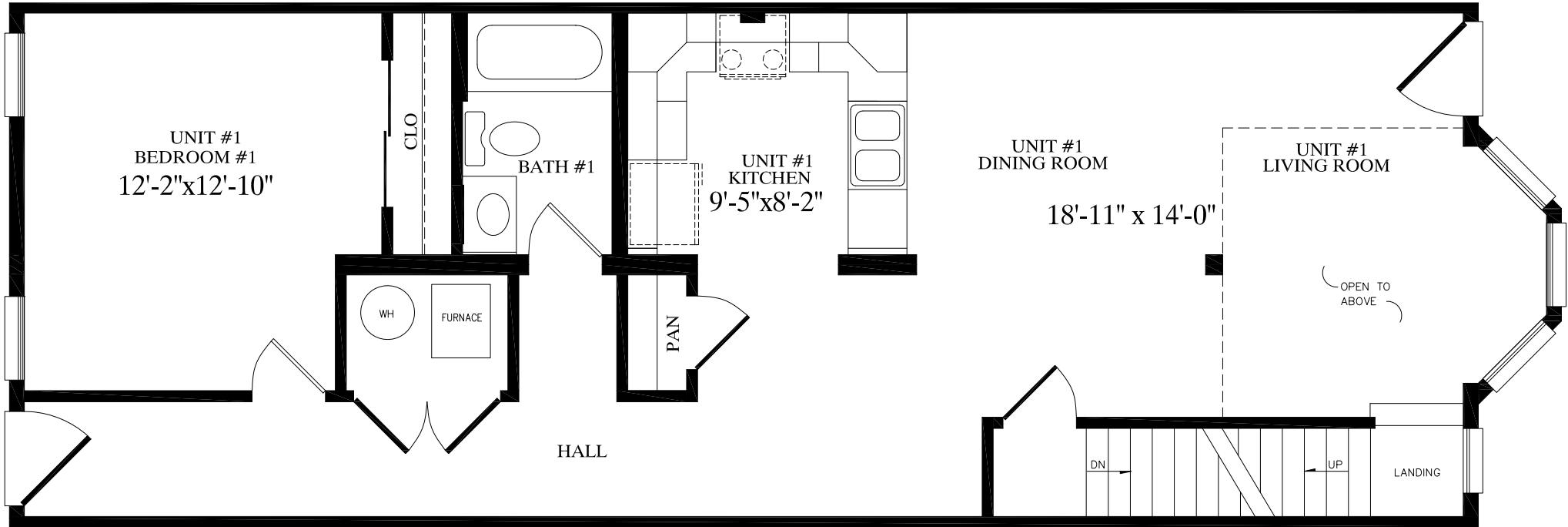
962.5 SQ-FT LIVING AREA PER UNIT

28'-0" x 70'-0"



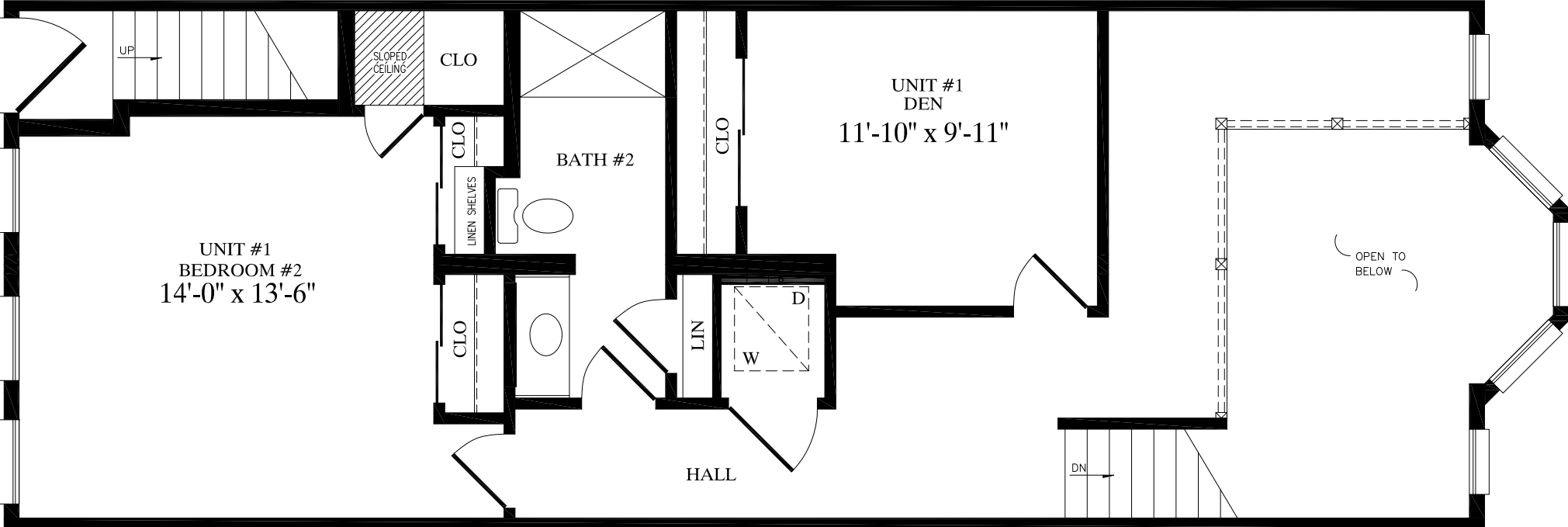


1ST FLOOR OF UNIT #1

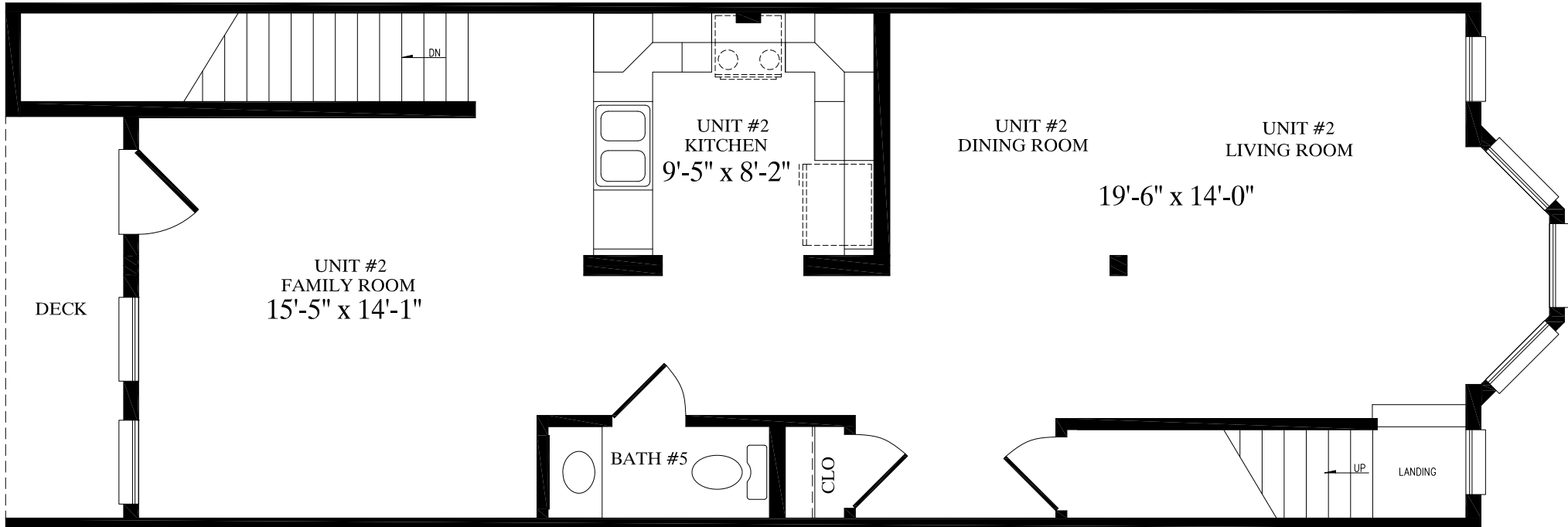


CREEDMOOR
18'-0" X 50'-0"
1819 Sq. Ft. PER UNIT
3638 TOTAL Sq. Ft.

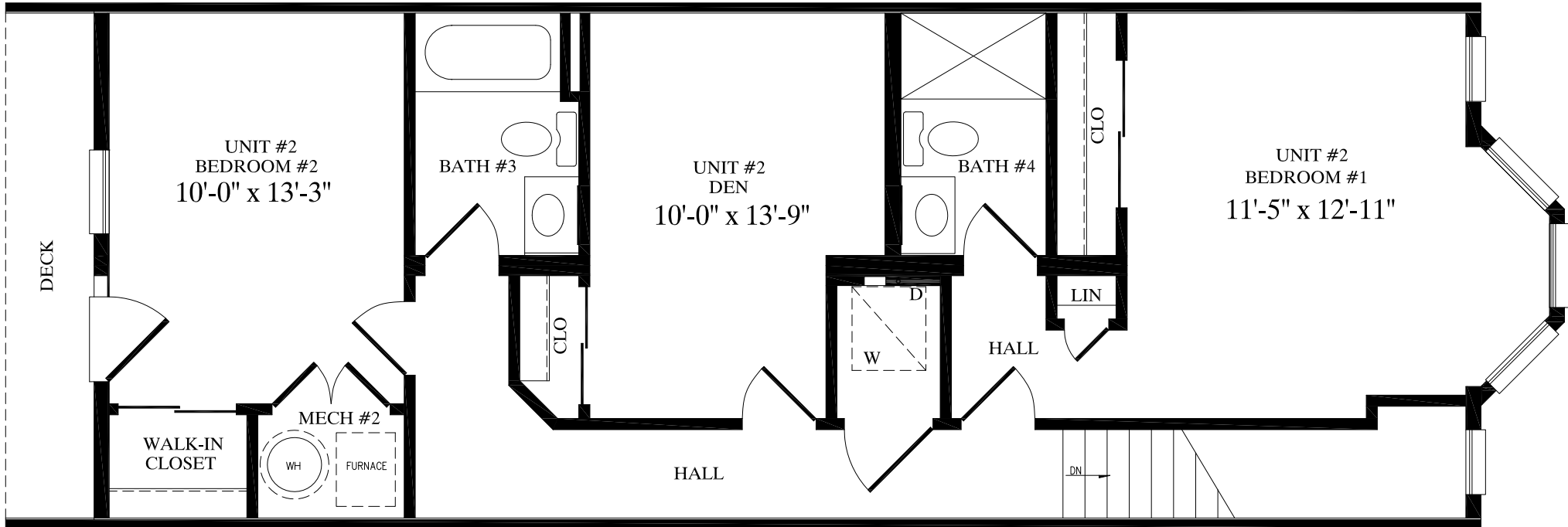
2ND FLOOR OF UNIT #1



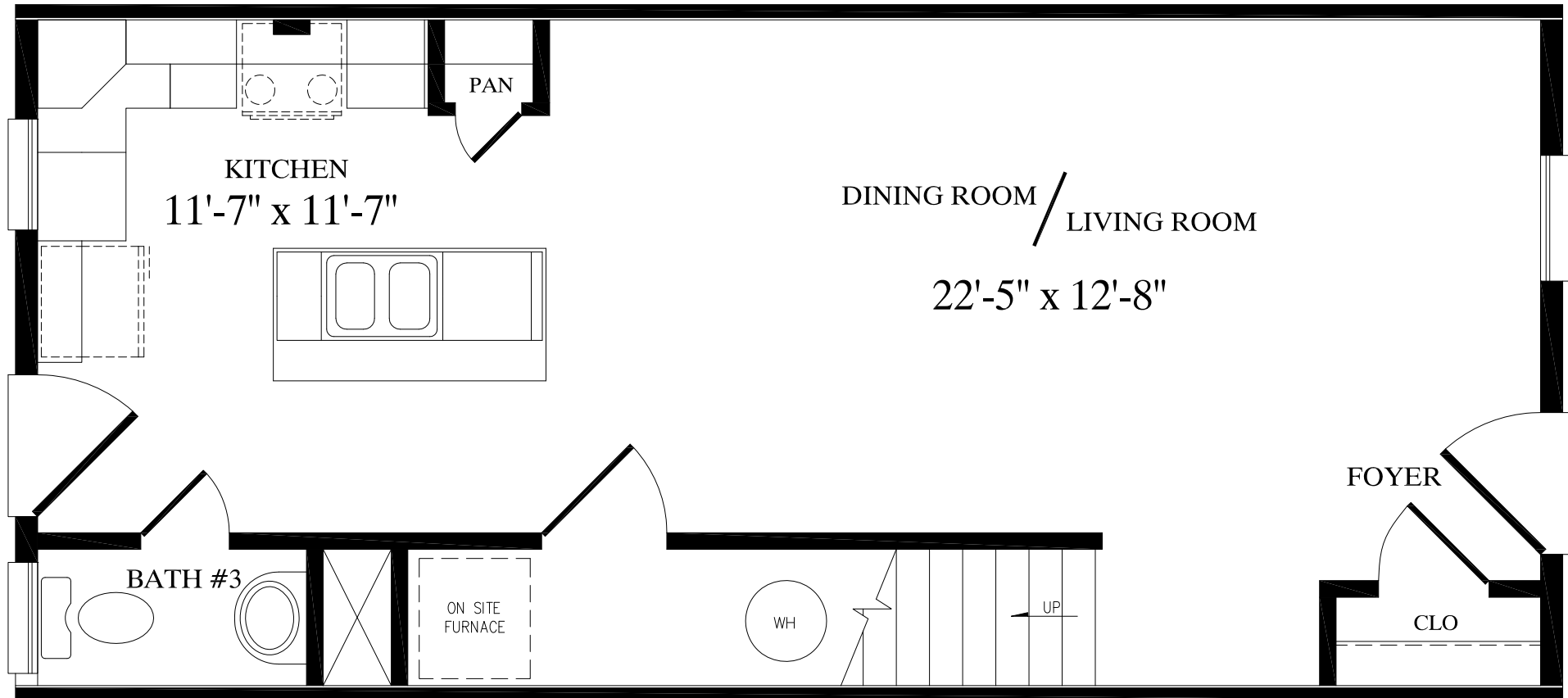
1ST FLOOR OF UNIT #2



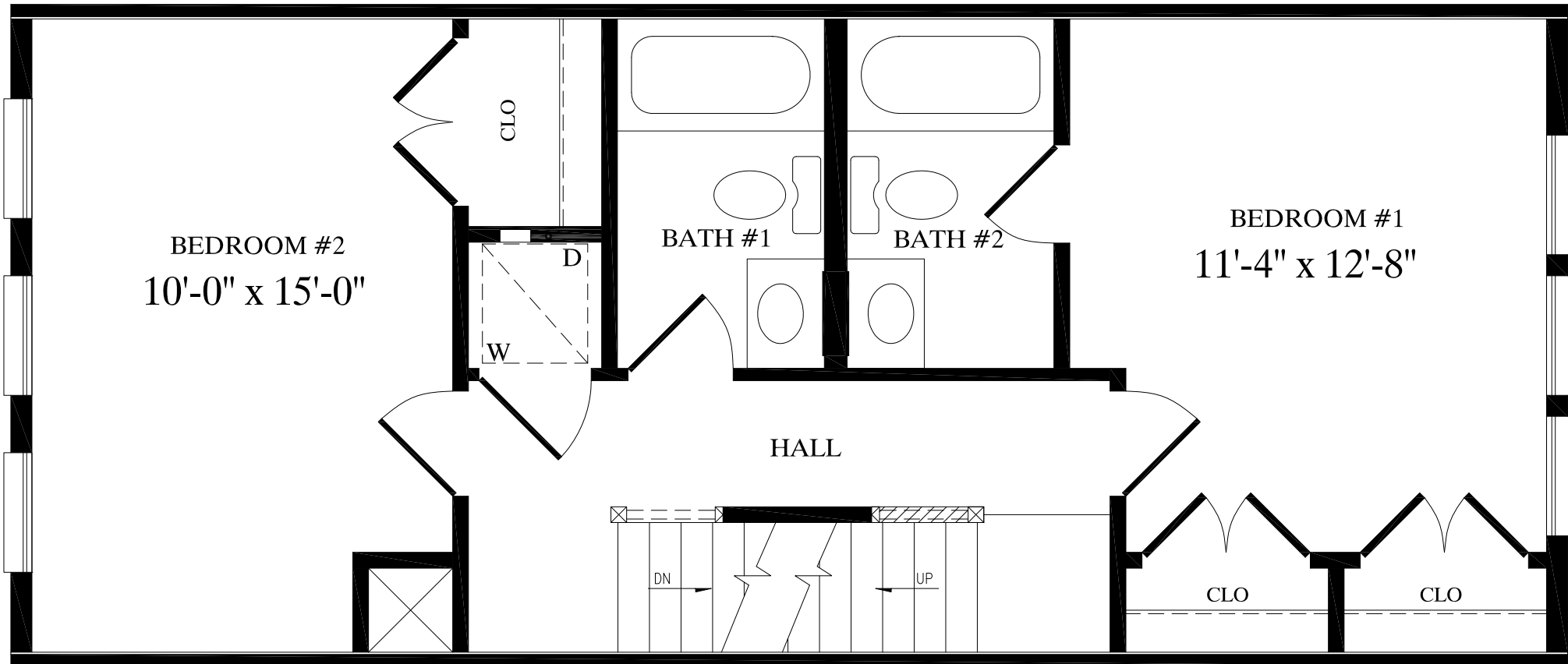
2ND FLOOR OF UNIT #2







CRISFIELD
16'-0" X 35'-0"
1120 TOTAL Sq. Ft.



BEDROOM #2
10'-0" x 15'-0"

BATH #1

BATH #2

HALL

BEDROOM #1
11'-4" x 12'-8"

CLO

D

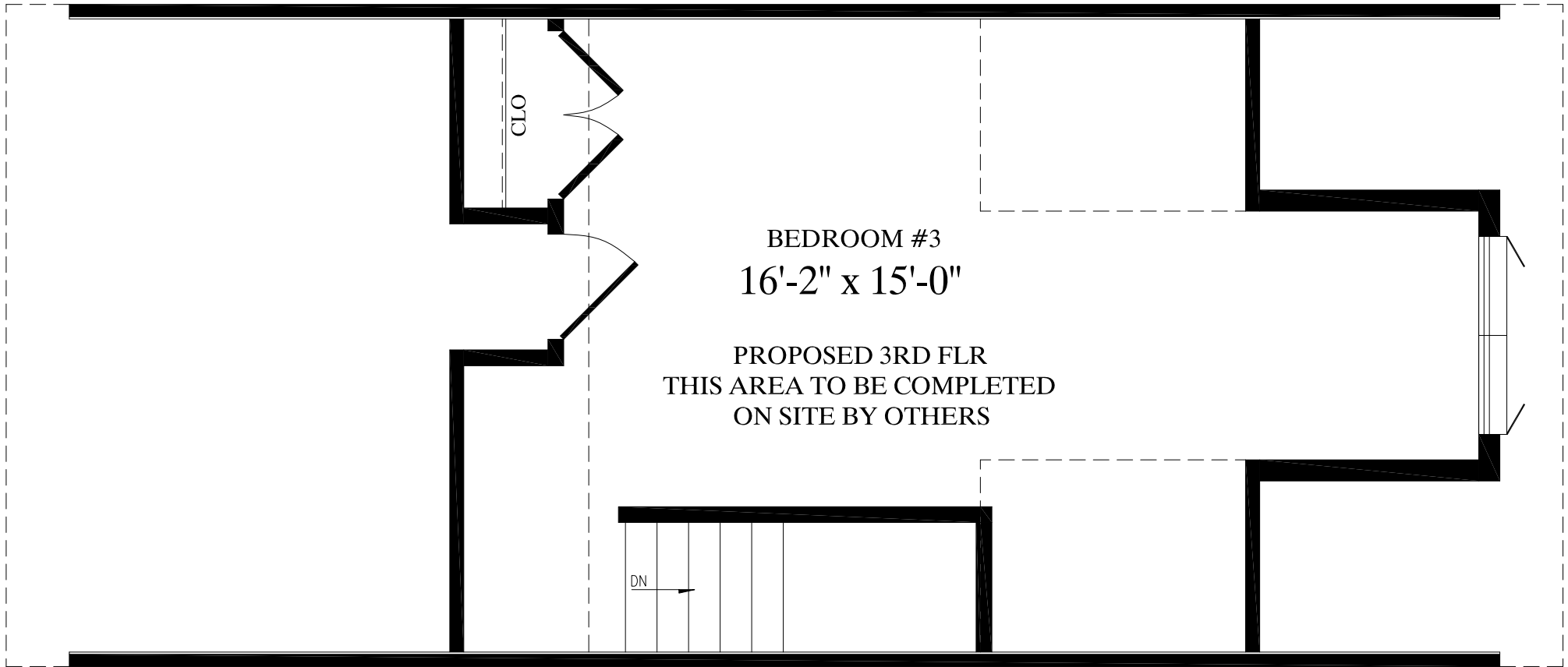
W

DN

UP

CLO

CLO



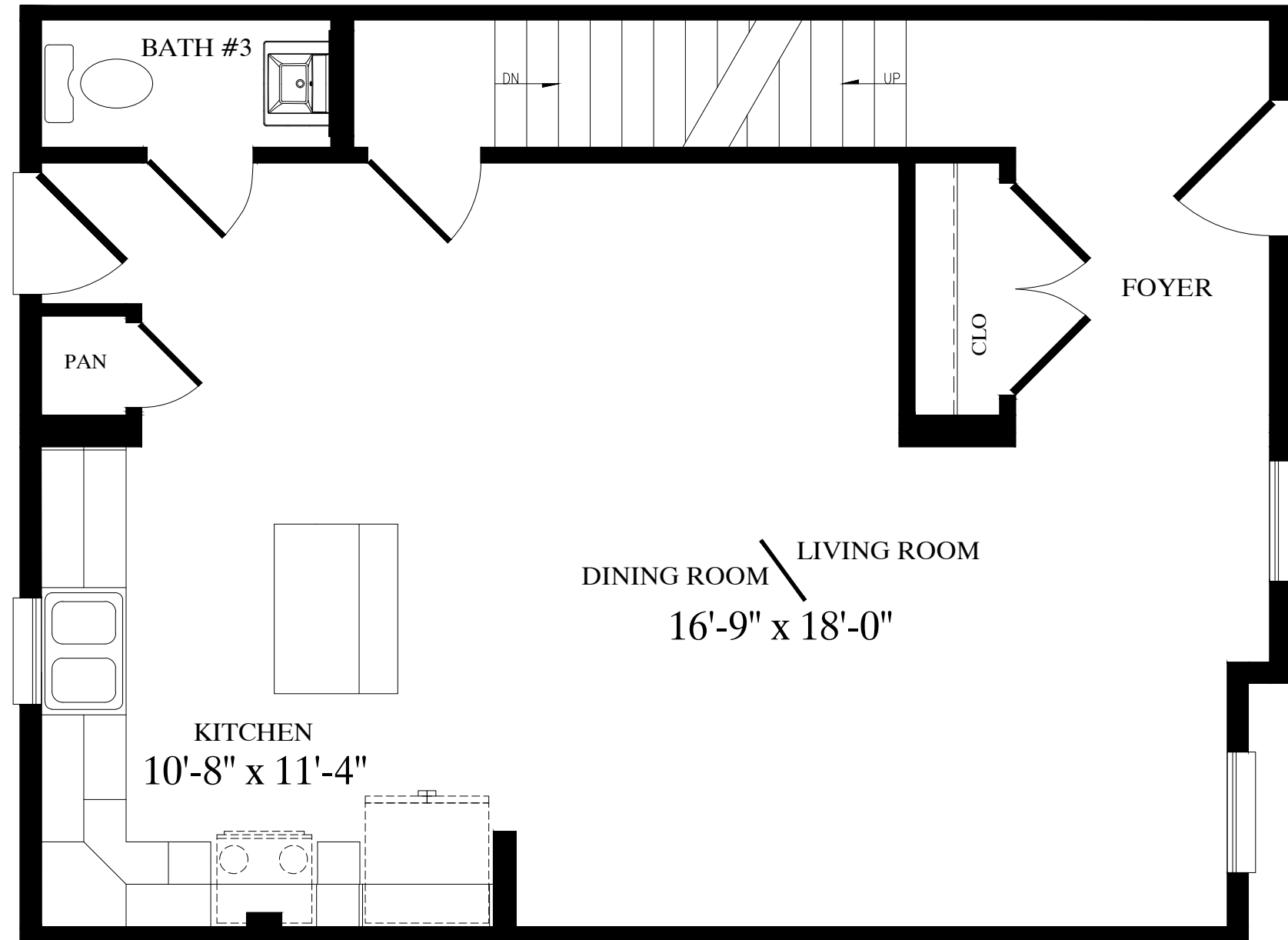
BEDROOM #3
16'-2" x 15'-0"

PROPOSED 3RD FLR
THIS AREA TO BE COMPLETED
ON SITE BY OTHERS

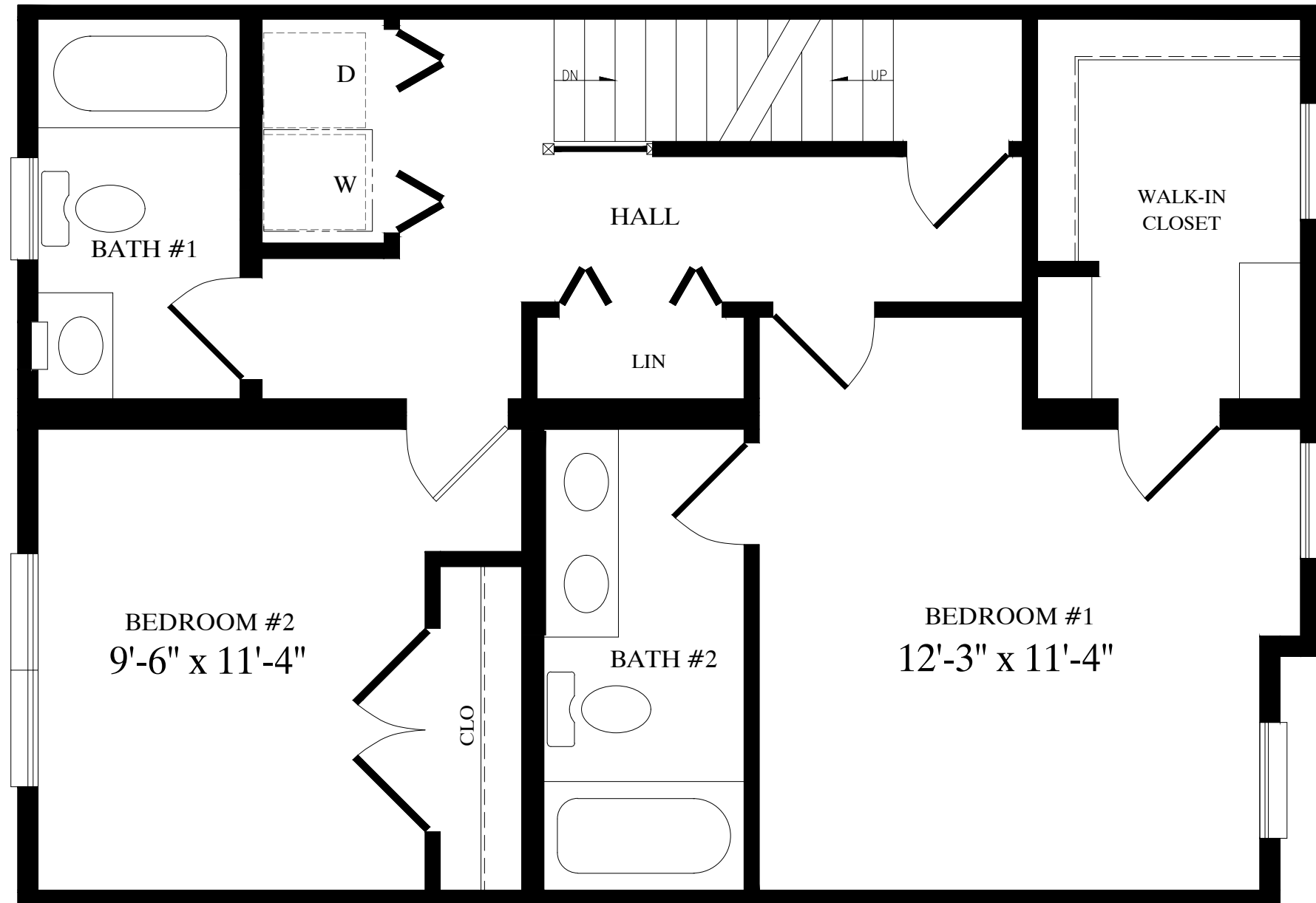
CLO

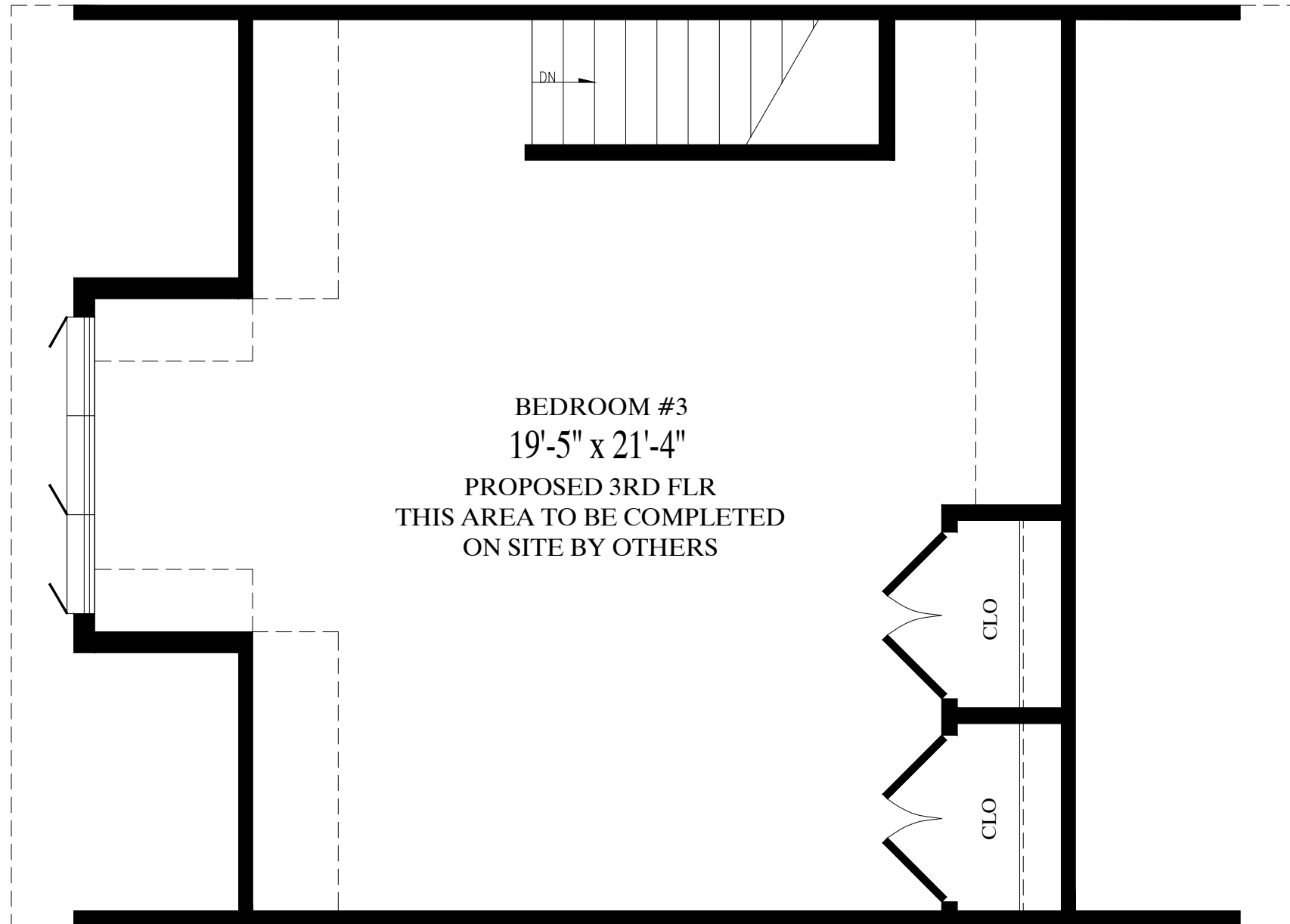
DN





CROWNSVILLE
22'-0" X 30'-0"
1357 TOTAL Sq. Ft.





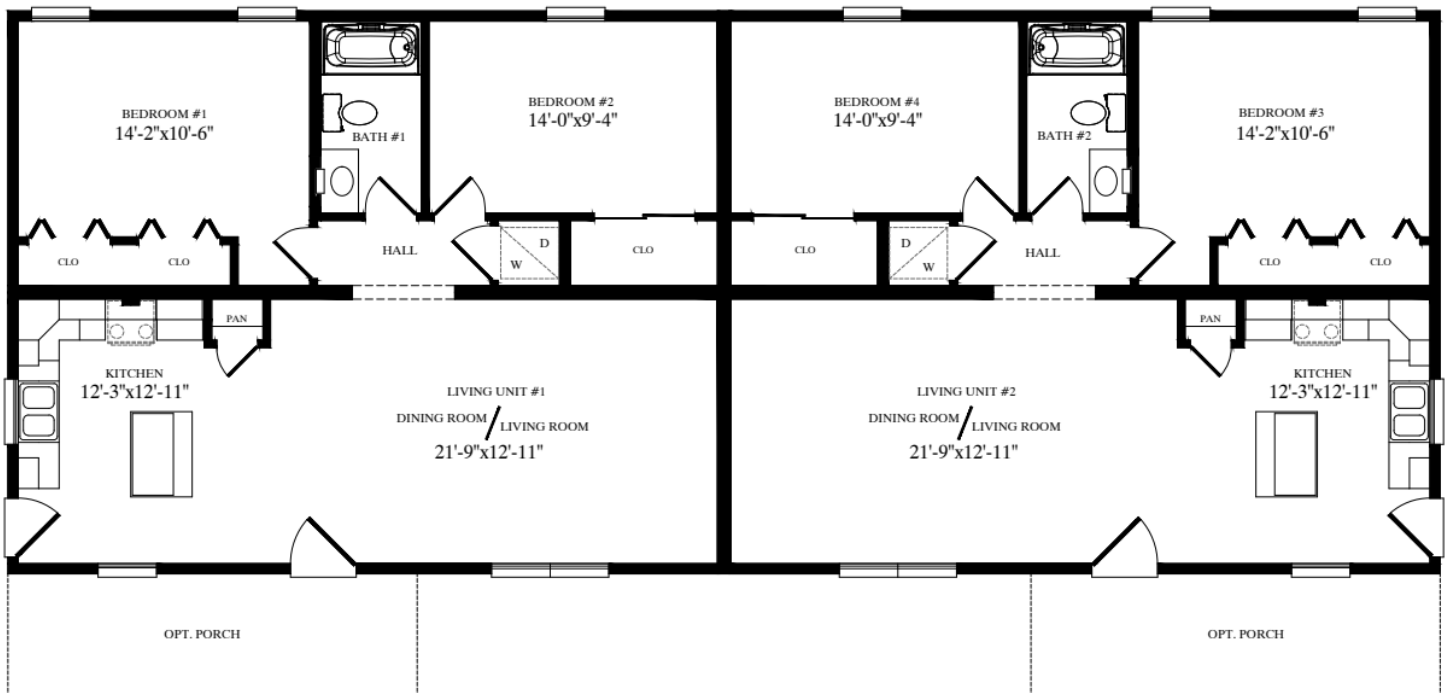
BEDROOM #3
19'-5" x 21'-4"
PROPOSED 3RD FLR
THIS AREA TO BE COMPLETED
ON SITE BY OTHERS



Loveland

962.5 SQ-FT LIVING AREA PER UNIT

28'-0" x 70'-0"

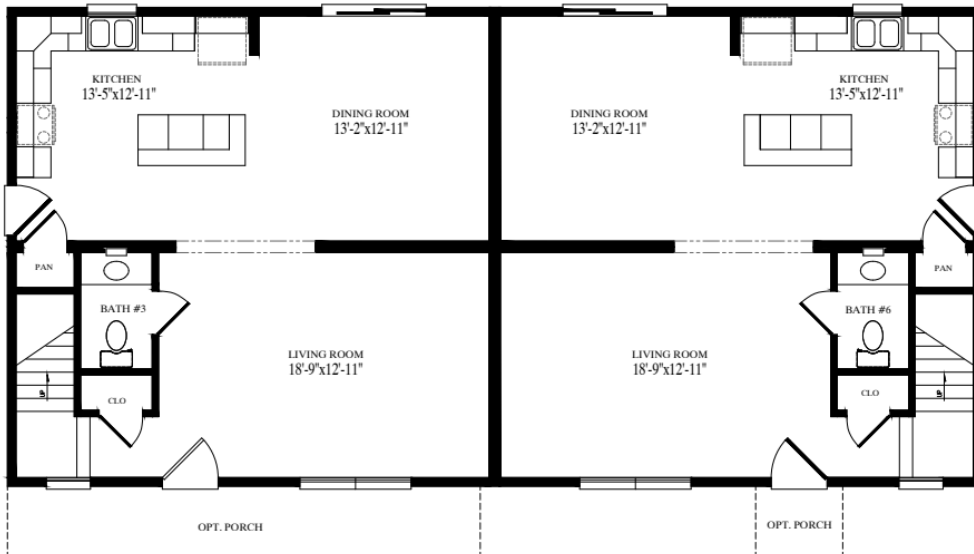




Springfield

1540 SQ-FT LIVING AREA PER UNIT
28'-0" x 56'-0"

Springfield 2-Story Duplex 1st floor



Springfield 2-Story Duplex 2nd floor

